



BiteSize
Beauty

Lashes & Brows



Contents

Page 1	Introduction
Page 3	Contra-indications
Page 9	Preparation of the Eye Treatment Work Area
Page 11	Skin Sensitivity Test
Page 13	Lash & Brow Cleanse Routine
Page 15	Choosing an Eyebrow Shape
Page 17	Eyebrow Shapes to Compliment Face Shapes
Page 19	Guidelines for Eyebrow Shaping
Page 22	Eyebrow Shape Procedure
Page 25	Eyebrow Artistry
Page 28	Tinting Products
Page 31	Eyebrow Tint Procedure
Page 34	Eyelash Tint Procedure
Page 37	Eyebrow Shaping & Lash/Brow Tinting Aftercare Advice
Page 39	Artificial Lash Products and Equipment
Page 42	Strip Lash Procedure
Page 45	Flare Lash Procedure
Page 48	Flare Lash Removal
Page 50	Contra-actions
Page 52	Strip and Flare Lash Aftercare Advice

Guidelines for Eyebrow Shaping



1. Line up an orange stick with the corner of the nose and the inner corner of the eye. This line is where the eyebrow should start.
2. Line up the orange stick with the corner of the nose and the pupil. This area is where the highest point/the arch of the eyebrow should fall.
3. Line up the orange stick with the corner of the nose and the outer corner of the eye. The length of the eyebrow should finish at this point.

Eyebrow Shape Procedure

1. Check for contra-indications.
2. Prepare yourself or the model for treatment.



3. Wash your hands with an antibacterial soap to minimise the risk of cross infection, you may prefer to wear gloves.

4. Cleanse the brow area to remove all traces of oil and make-up.



5. Measure the brows with a spatula or an orange stick as in the diagrams.



6. Give the model a mirror and discuss any changes you intend to make to the natural brow shape.

7. Wipe over the brow area with witch hazel.



8. Brush the brows upwards and then in the direction of the natural hair growth using an eyebrow brush.

Eyelash Tint Procedure

Before an eyelash tint can take place, it is important to conduct a skin sensitivity test and check that there are no contra-indications present. Next discuss the results that you would like to achieve, then protect the hair with a headband.



1. Cleanse the eye area using a non-oily make-up remover and blot the area dry with a tissue. Measure and cut the eye shields/cotton pads to fit the shape under the lower eyelid. Apply petroleum jelly to the underneath side of the shields. (this is used to prevent skin staining)



2. Ask the model to look up and apply petroleum jelly underneath the eye area. Then carefully fit the eye shields underneath the lower lashes, making sure you do not trap any lashes. Gently press down to secure them in place.



3. Ask the model to close their eyes and apply petroleum jelly to the upper eye lid as close to the natural lashline as possible avoiding the lashes. Grease on the lashes would act as a barrier to the tint.






4. Using an orange stick mix together 5mm of tint with 2-3 drops of peroxide in a glass dish. Apply the product evenly to the lashes working from root to tip using a small brush.

Artificial Lash Products and Equipment

Artificial Lashes enhance the length, thickness and fullness of the natural lashes. They are made of various fibres including silk, mink and synthetic hair.

Lashes are available in various lengths, colours and thicknesses from natural looking to glamorous, fun and dramatic.

Product	Description
<p>Strip Lashes</p>   	<p>These lashes are temporary and are designed to be worn for short periods of time. They are not designed to be worn whilst sleeping or in water.</p> <p>They are applied to the skin of the eyelid as close to the natural lashes as possible. One is shaped for the left eye and one shaped for the right eye.</p> <p>The lashes can be trimmed to reduce the length if required.</p> <p>You can remove these lashes yourself. They can be cleaned with a non-oily eye make-up remover, placed in between two tissues and rolled around a pencil to retain their curl.</p> <p>To preserve the life and curl of the lashes they should be placed in their original packaging when not in use.</p>

<p>Flare Lashes</p> 	<p>These lashes are designed to be worn for several days.</p> <p>They are applied to the base of the hair only and should not touch the skin of the eyelid.</p> <p>The lashes can be trimmed to reduce the length if needed.</p> <p>The lashes will loosen and fall off gradually but they shouldn't be reused.</p>
<p>Adhesive</p> 	<p>There are different types of adhesive which have been designed for use with the different types of lashes.</p> <p>Strip lash adhesive - is flexible and latex based and is able to be applied directly onto the skin. It is available in white (which dries clear) and dark.</p> <p>Flair lash adhesive - is solvent based and inflexible. It is not suitable for use on the skin. It is available in clear and black.</p>
<p>Individual Lash Remover/Lash Solvent</p> 	<p>This is a liquid product that is used to dissolve away the adhesive that is used in artificial lash application.</p>

Flare Lash Procedure

1. Check for any contra-indication and confirm that the skin sensitivity test result for the adhesive was negative.



2. Wash your hands with antibacterial soap to minimise the risk of cross-infection.



3. Select the appropriate length and colour of lashes required.



4. Cleanse the eye area with non-oily eye make-up remover.



5. Comb the lashes from the root to the tip using a lash comb or a disposable mascara wand.

Discover more secrets of the Beauty World with our easy to follow Bitesize Beauty Guides and Video Tutorials

Facial



Lashes & Brows



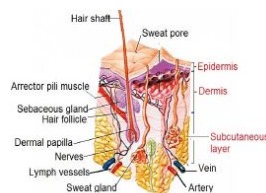
Make-up



Manicure



Anatomy & Physiology



Pedicure

